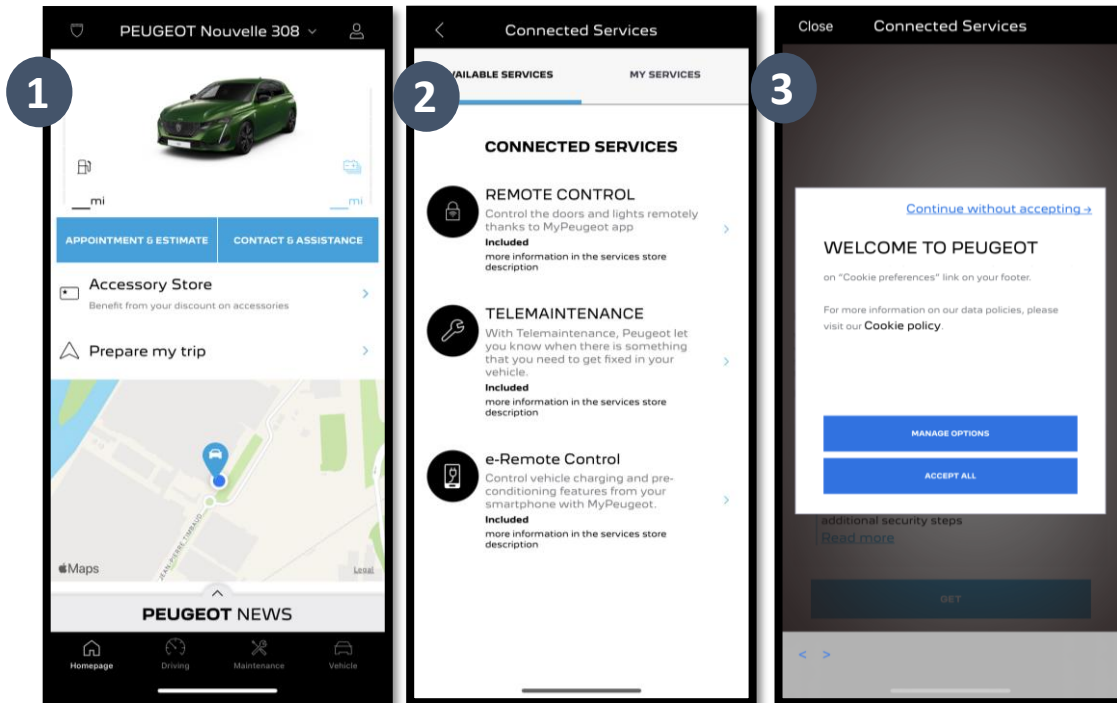


REMOTE CONTROL

HOW TO SUBSCRIBE AND ACTIVATE THIS SERVICE

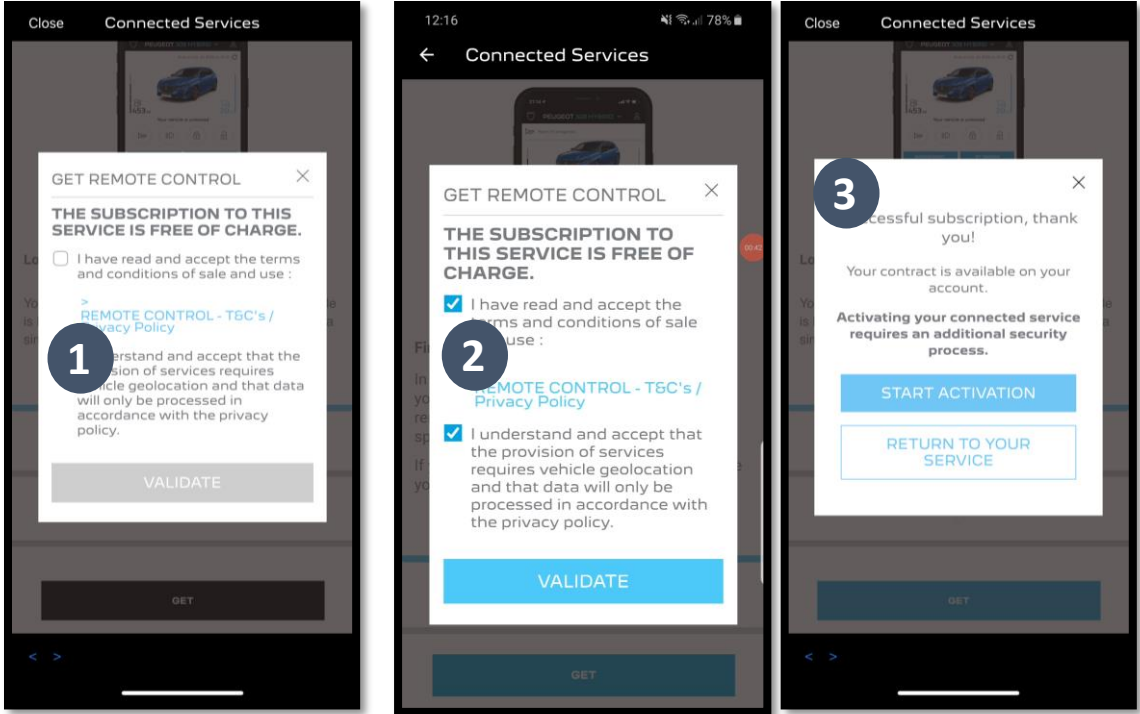
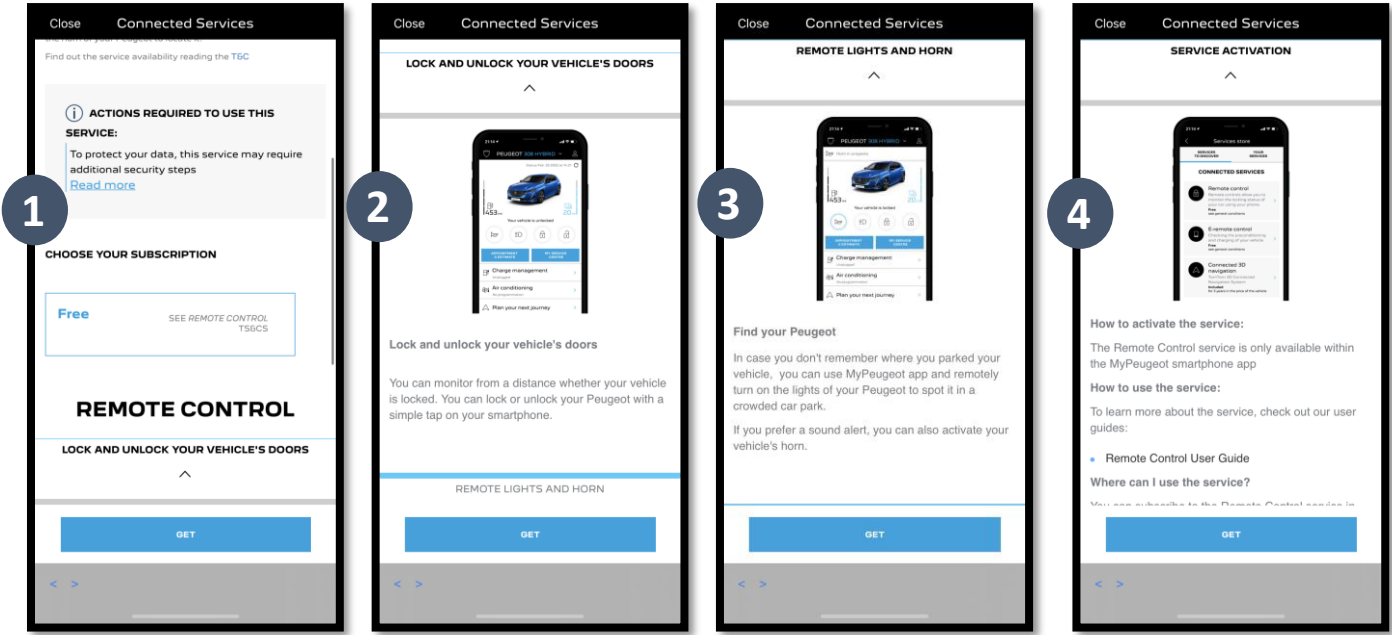
This user guide will explain the path that you need to follow to activate Remote Control for your car.

First of all, to use Remote Control, you need a **MyPeugeot** account and register your car. If you haven't yet installed the mobile app on your smartphone, you can easily do it by downloading it from **Google Play Store** or **Apple App Store**.

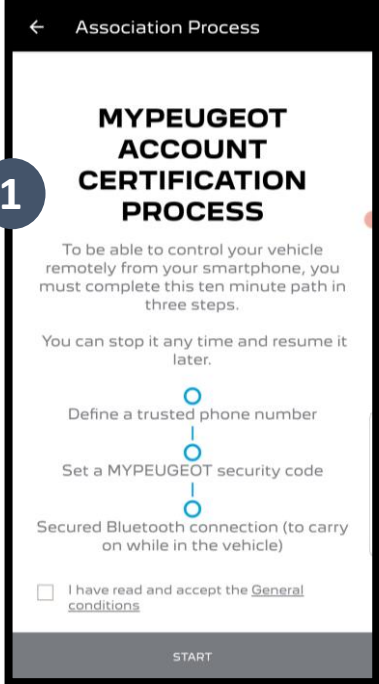


Open the MyPeugeot app, visit the **Services Store** section and go to **“Connected Services”**. Within it, you can see the **Available Services** for your vehicle. Tap on **“Remote Control”** to start the activation process. You will be greeted with a pop up that will let you choose your cookie preferences.

You will be redirected to the Service Activation page, where you can read a description of the **Remote Control** service and a summary of its benefits. **Scroll down and tap** on the **“GET”** button to continue with the activation.



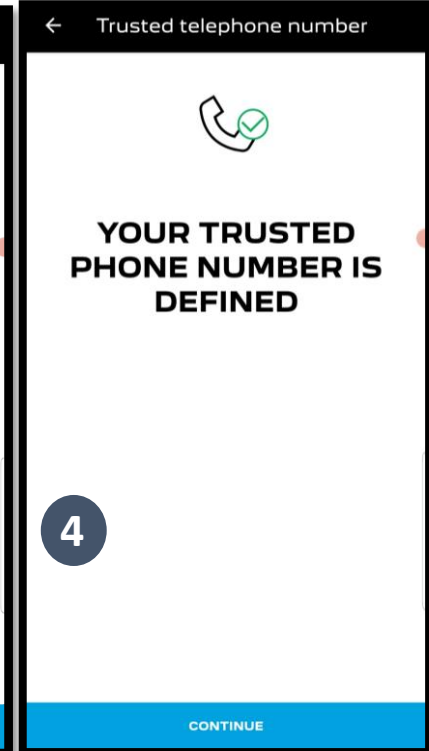
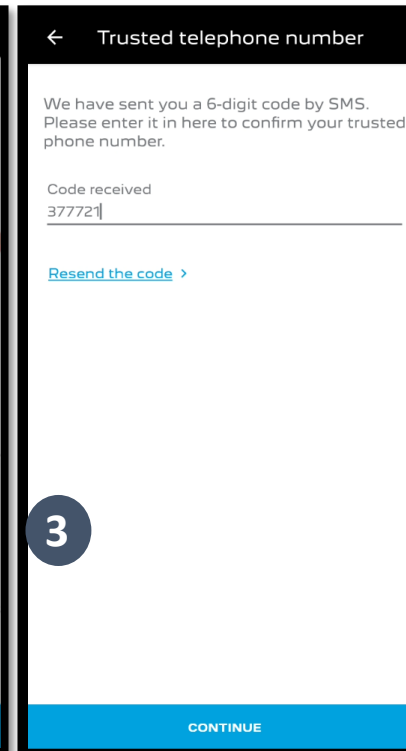
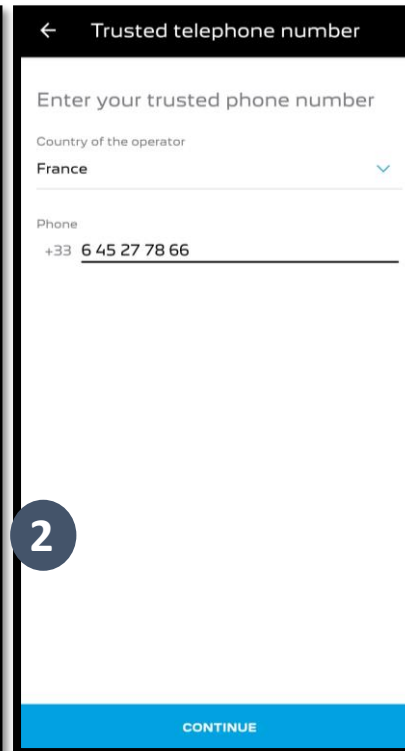
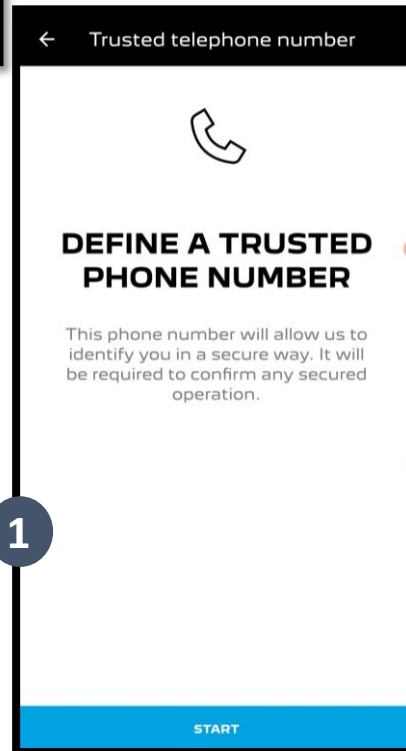
To activate Remote Control is important to read and accept the **General Conditions**. Once you have accepted, tap on the **“Start Activation”** button.



The **next 3 steps** that you need to follow will only take you a few minutes. Once you complete them, you'll be able to enjoy your Remote Control.

First, you must accept the Terms and Conditions, then tap on **“Start”**.

1. Enter your phone number and enter the code that you received via SMS.



2. Create your personal **4-digit Safety Code**. To start this step, you will receive a temporary code via SMS. First insert it to register your phone and then create your **Safety Code**. This code will allow you to secure remotely access to your car and to use the Remote Control features.

1 **Association Process**

MYPEUGEOT ACCOUNT CERTIFICATION PROCESS

To be able to control your vehicle remotely from your smartphone, you must complete this ten minute path in three steps.

You can stop it any time and resume it later.

Define a trusted phone number

Set a MYPEUGEOT security code

Secured Bluetooth connection (to carry on while in the vehicle)

START

2 **MYPEUGEOT security code**

SET A MYPEUGEOT SECURITY CODE

This phone number will allow us to identify you in a secure way. It will be required to confirm any secured operation.

START

3 **MYPEUGEOT security code**

We have sent you a 9-digit code by SMS. Please confirm it to set your safety code.

Code received

[Resend the code >](#)

CONTINUE

4 **MYPEUGEOT security code**

We have sent you a 9-digit code by SMS. Please confirm it to set your safety code.

Code received

163074373

[Resend the code >](#)

CONTINUE

5 **MYPEUGEOT security code**

We have sent you a 9-digit code by SMS. Please confirm it to set your safety code.

Code received

163074373

[Resend the code >](#)

Define a 4-digit safety code to be able to interact with your car from your smartphone.

Set the security code

.... ✓

Confirm

.... ✓

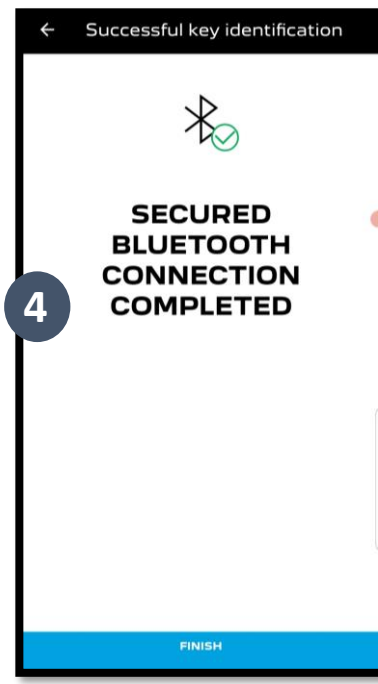
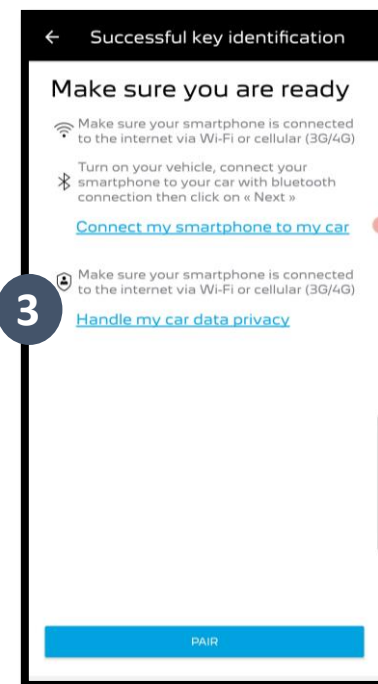
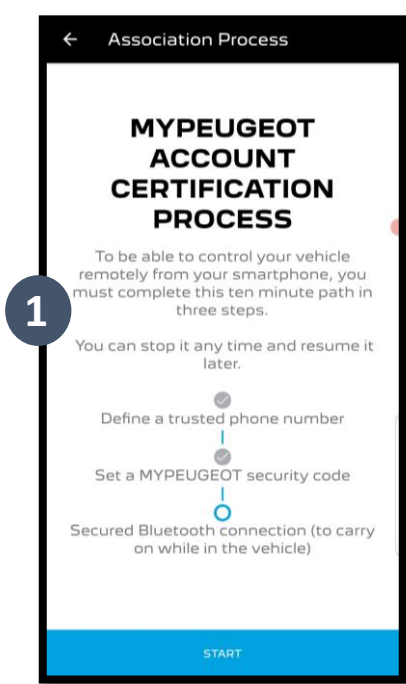
CONTINUE

6 **MYPEUGEOT security code**

SMARTPHONE REGISTERED

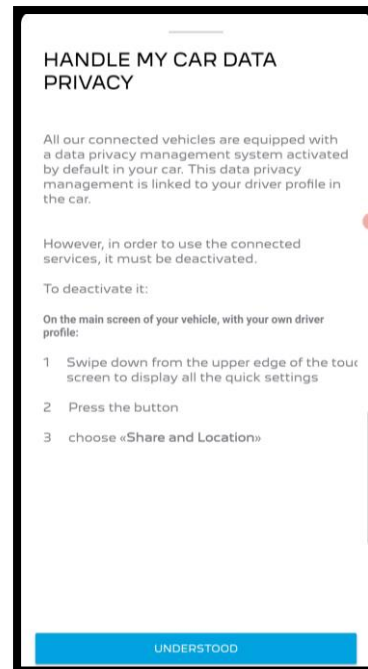
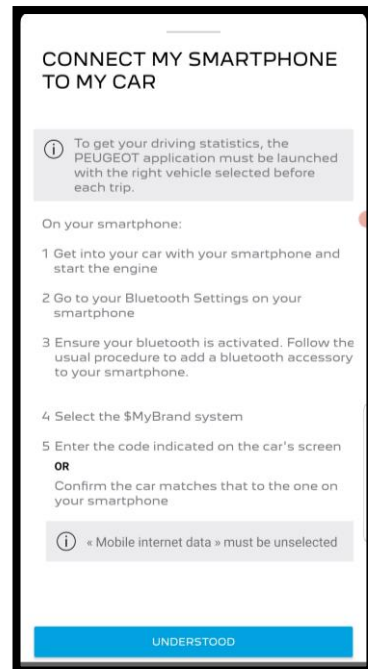
You can use this smartphone with your vehicle

CONTINUE



3. Connect your mobile phone to your vehicle using **Bluetooth**. Go inside your vehicle, turn on the engine, then switch on Bluetooth on your mobile phone (if it is not already turned on), and tap on “**PAIR**” to start the association.

Note: Make sure to read the “Connect My Smartphone to My Car” and “Handle My Car Data Privacy” sections beforehand.



The **Remote Control** Service is now active. You will be greeted with a pop up stating that you may be asked to update your vehicle equipment software to fully enjoy all its features and manage your car remotely.

After installing the update, activation on your vehicle can take up to 24 hours. You can make several trips of at least 15 minutes to facilitate it.

Update your multimedia car system

It may happen that the update is not instantly available after the end of your service activation process. Don't worry, it will show a bit later.

On your central car screen

1

The download is done automatically.

2

Once the download is finished, your car will display a notification at the end of the journey to launch the installation. Press « Install now ».

If no notification was displayed in the car

3

Let yourself be guided by the information on the screen. Please note that your vehicle infotainment screen will not be available during the installation process. Please set the climate control before installation

UNDERSTOOD

off.

1

The download is done automatically.

2

Once the download is finished, your car will display a notification at the end of the journey to launch the installation. Press « Install now ».

If no notification was displayed in the car

3

Let yourself be guided by the information on the screen. Please note that your vehicle infotainment screen will not be available during the installation process. Please set the climate control before installation and ensure you check your surrounding areas before moving off.


After installing the update, the activation of your service can take up to 24 hours. Make several trips of at least 15 minutes.

UNDERSTOOD

PEUGEOT

Nouvelle 308

Turn off your engine for 5 minutes, allow data sharing in your vehicle then make a 15 minutes journey.
[Close](#) [Find out more >](#)



mi

mi

APPOINTMENT & ESTIMATE

CONTACT & ASSISTANCE

Accessory Store

Prepare my trip

PEUGEOT NEWS

20

Once you have activated **Remote Control** for your vehicle, you can check the locking status of your car, lock and unlock the doors or turn on the light and the horn in few simple steps.

To remotely control your car, you need only to open **MyPeugeot app**, select the icon of the command that you would like to send to your vehicle, confirm the action and wait a few seconds. Remember that every 7 days, you will need to confirm the remote commands using your safety code.

